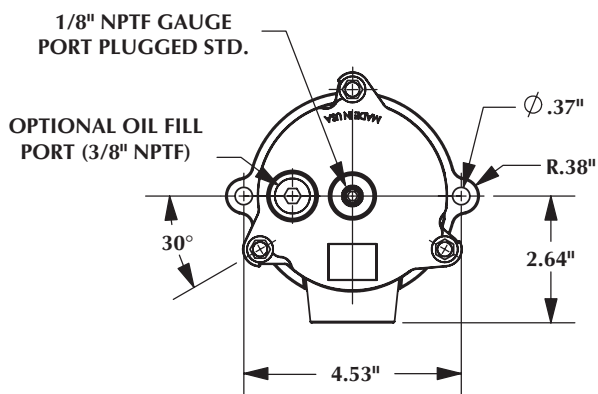


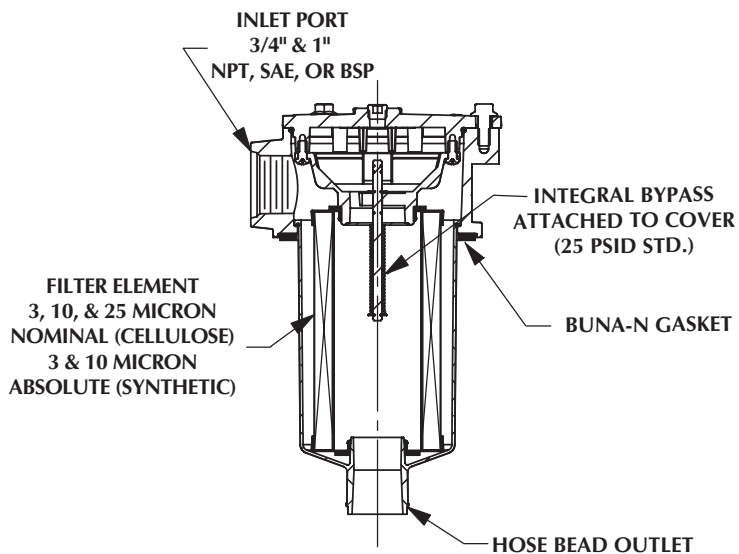
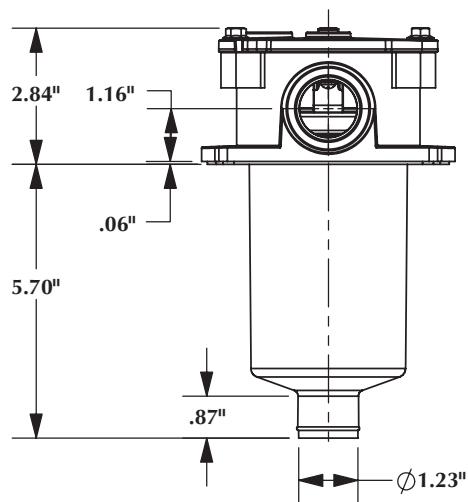
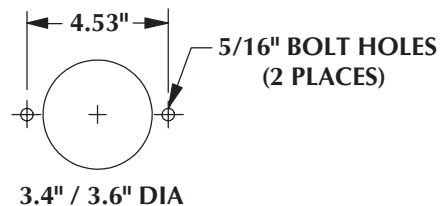
SMF SERIES TANK TOP FILTERS

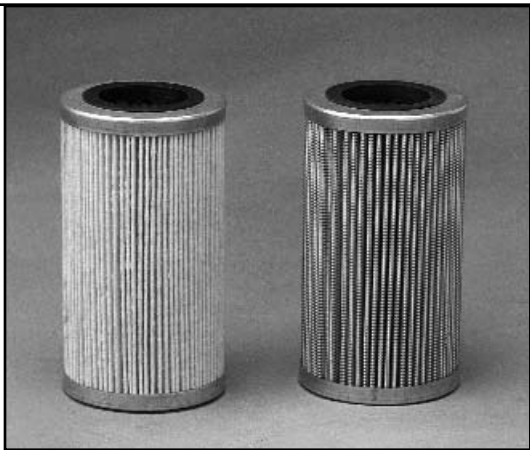
Flows Up To: 40 GPM (Return)
 Port Sizes: 3/4" & 1" NPT, SAE & BSP
 Pressure: 45 PSI Max. Operating Pressure
 145 PSI Burst
 Temperature: -15 to +230°F Operating
 Head/Cover: Aluminum Alloy
 Bowl: Polyamide
 Applications: Petroleum based fluids only
 Consult factory for synthetic fluids

TANK-TOP FILTERS



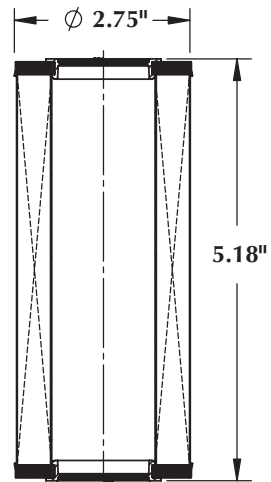
INSTALLATION LAYOUT



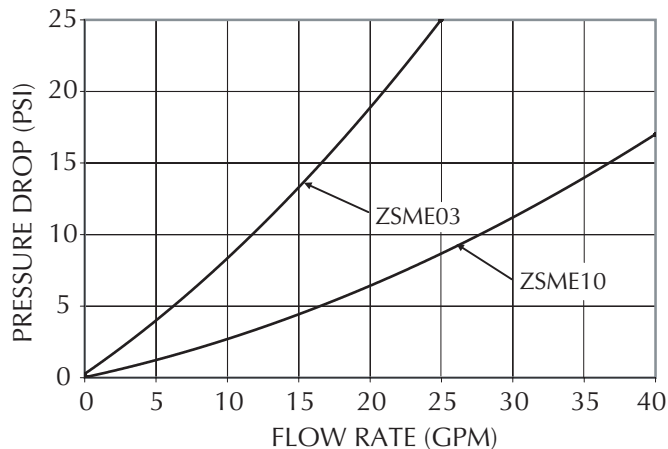
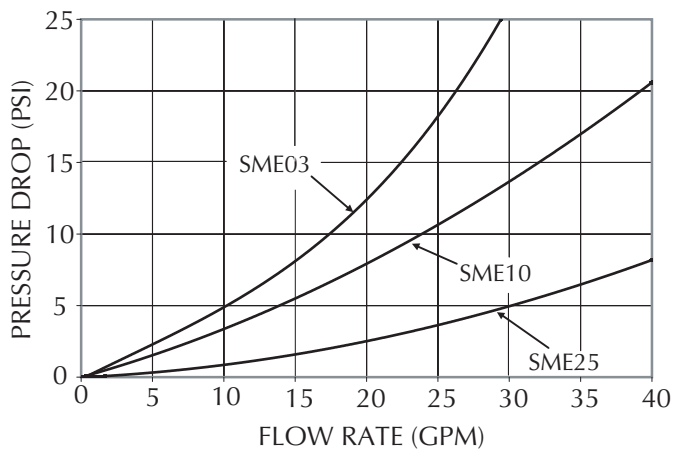


SME & ZSME SERIES FILTER ELEMENTS CELLULOSE AND SYNTHETIC

SME & ZSME FILTER ELEMENTS		
Code	Media Type	Filtration Rating
SME03	Cellulose	Beta ₃ =5.3
SME10	Cellulose	Beta ₁₀ =5.3
SME25	Cellulose	Beta ₂₅ =2.9
ZSME03	Z-Glass	Beta ₃ >200
ZSME10	Z-Glass	Beta ₁₀ >200



Average pressure drop through clean assembly with 150 SUS oil at 105° F



TANK-TOP FILTERS

HOW TO ORDER SMF - XXX - X

Code	Port Size
12C	3/4" BSP (G3/4"-14)
12P	3/4" NPTF
12S	1 1/16"-12UN (SAE-12)
16C	1" BSP (G1"-11)
16P	1" NPTF
16S	1 5/16"-12UN (SAE-16)

Code	Oil Fill Port Option
0	No Oil Fill Port
N	3/8" NPTF Fill Port w/ Plug