

S6000 SERIES PRESSURE FILTERS WITH ΔP INDICATOR OPTIONS



Flows Up To: 65 GPM (246 L/MIN)

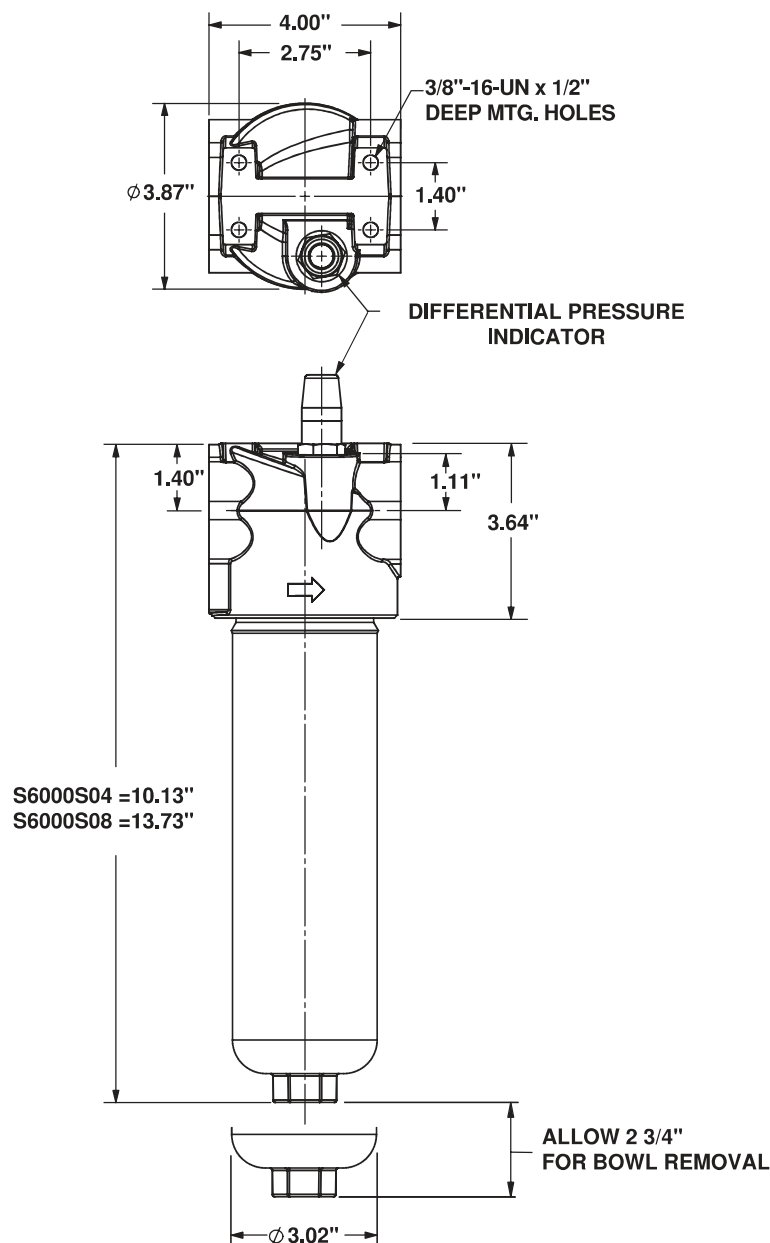
Port Sizes: 1 1/16"-12UN (SAE-12)

1" SAE Flange (Code 62)

1 5/16"-12UN (SAE-16)

Operating Pressure: 6,000 PSI (414 BAR)

Application: Suitable for all conventional hydraulic fluids except phosphate esters



SPECIFICATIONS

Code Number	Removal Ratings	
03H ("Z-Glass")	$\beta_{<4\mu(c)} = 200$	$\beta_{<4\mu(c)} = 1000$
03L ("Z-Glass")	$\beta_{<4\mu(c)} = 200$	$\beta_{<4\mu(c)} = 1000$
06L ("Z-Glass")	$\beta_{5\mu(c)} = 200$	$\beta_{6\mu(c)} = 1000$
10L ("Z-Glass")	$\beta_{8\mu(c)} = 200$	$\beta_{10\mu(c)} = 1000$
10H ("Z-Glass")	$\beta_{8\mu(c)} = 200$	$\beta_{10\mu(c)} = 1000$
20L ("Z-Glass")	$\beta_{19\mu(c)} = 200$	$\beta_{23\mu(c)} = 1000$

REFERENCE

$\beta_{x(c)}$ Rating of 1000=99.9% Efficiency

$\beta_{x(c)}$ Rating of 200= 99.5% Efficiency

PRESSURE RATING

Maximum Operating: 6,000 PSI (414 Bar)

Burst Pressure: 18,000 PSI (1,241 Bar)

Rated Fatigue Pressure:

0-6000-0 PSI for 1,000,000 Cycles

TEMPERATURE RANGE

Operating: -15° F to +230° F

(-26° C to +110° C)

BY-PASS SETTING OPTION:

No Bypass or 90 PSID

ΔP INDICATOR OPTIONS

Visual or

Electrical/Visual w/ DIN connector

FLUID COMPATIBILITY

Elements: Suitable For All

Conventional Hydraulic Fluids

Except Phosphate Esters

MATERIAL

Head: Ductile Iron

Bowl: Ductile Iron

Element Hardware: Plated Carbon

Steel End Caps, and Core

Filter Media: Z-Glass Fiber, Epoxy

End Cap Adhesive

WEIGHT

S6000S04: 16.2 lbs. (7.4 Kg)

S6000S08: 19.2 lbs. (8.7 Kg)

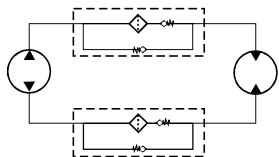
PRESSURE

S6000 SERIES PRESSURE FILTERS

Reverse Flow

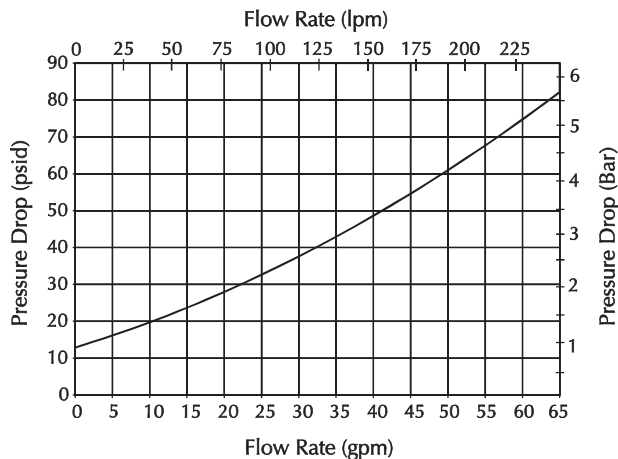
For hydrostatic drives and other systems where reverse flow is required, a valve is incorporated which allows fluid to pass through the element in one direction, and to by-pass the element when flow is reversed.

1. Rugged steel design that is built to last. Reverse Flow Valve is a spool/disc valve in a high strength machined steel body.
2. Applications requiring reverse flow to be mounted vertically, bowl down.



Reverse Flow Schematic

S6000 Reverse Flow Valve Pressure Drop
With 100 SUS Oil @ 100°F (32 cSt @ 40°C)



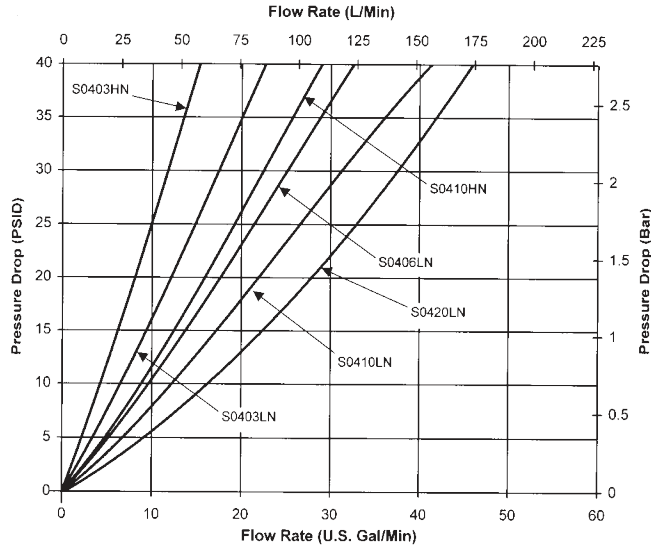
HOW TO ORDER: S6000 XXX XX XXX XXX X - S XX XXX X

Housing			Element	
Code	Port		Code	Seal Material
E16	1 1/16"-12 UN (SAE-12) w/ 1" SAE Flange (Code 62)		N	Buna "N"
S16	1 5/16"-12 UN (SAE-16)		V	Fluorocarbon
Code	Nominal Bowl Length		Code	Micron-Media-Collapse
04	4 Inches (100 mm)		03L	3 Micron, "Z-Glass", 300 PSID (20.7 BAR)
08	8 Inches (200 mm)		03H	3 Micron, "Z-Glass", 3,000 PSID (207 BAR)
Code	Indicator Option	Indicator Series	06L	6 Micron, "Z-Glass", 300 PSID (20.7 BAR)
000	No Indicator	None	10L	10 Micron, "Z-Glass", 300 PSID (20.7 BAR)
V80	Visual	DP0480	10H	10 Micron, "Z-Glass", 3,000 PSID (207 BAR)
H80	Vis/Elec w/DIN Connector	DP0580	20L	20 Micron, "Z-Glass", 300 PSID (20.7 BAR)
Code	By-Pass/Reverse Flow Valve		Code	Nominal Element Length
900	90 PSID (6 BAR) By-Pass / No Reverse Flow Valve		04	4 Inches (100 mm)
000	No By-Pass / No Reverse Flow Valve*		08	8 Inches (200 mm)
00R	No By-Pass / Reverse Flow Valve*		Element Series	
90R	90 PSID (6 BAR) By-Pass / Reverse Flow Valve		"S" Series	
REQUIRES PROPER ELEMENT SELECTION				
Code	Housing Seal Material			
N	Buna "N"			
V	Fluorocarbon			

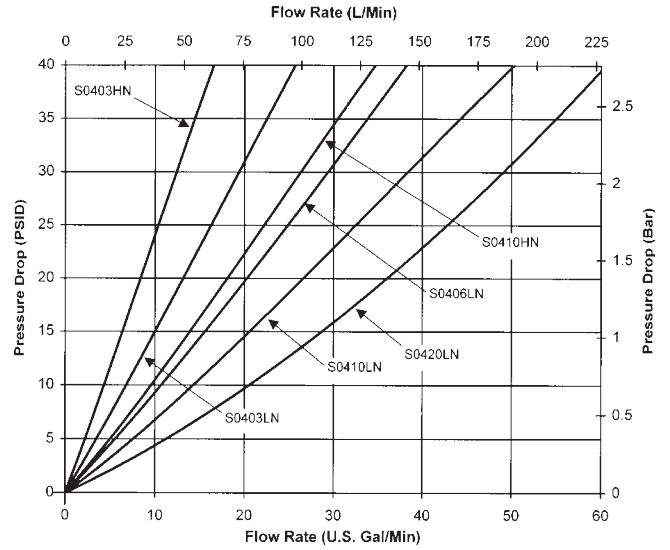
S6000 Pressure Drop Curves

Fluid Viscosity 150 SUS at 100°F (32 CS at 40°C)

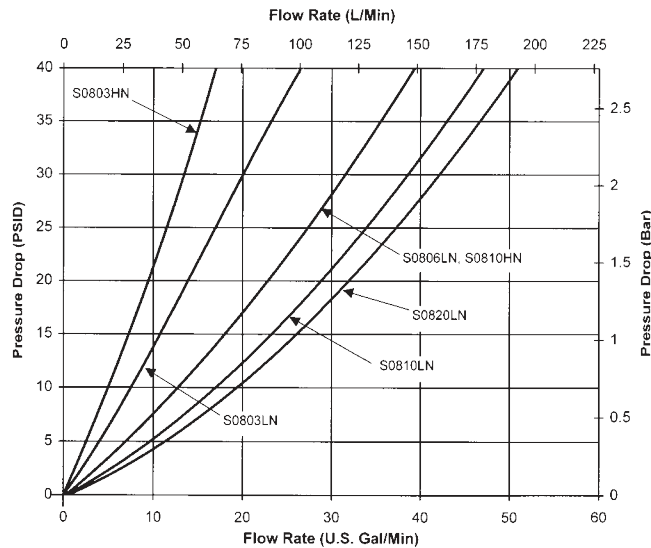
For 3/4" Ports and 4" (100 MM) Element



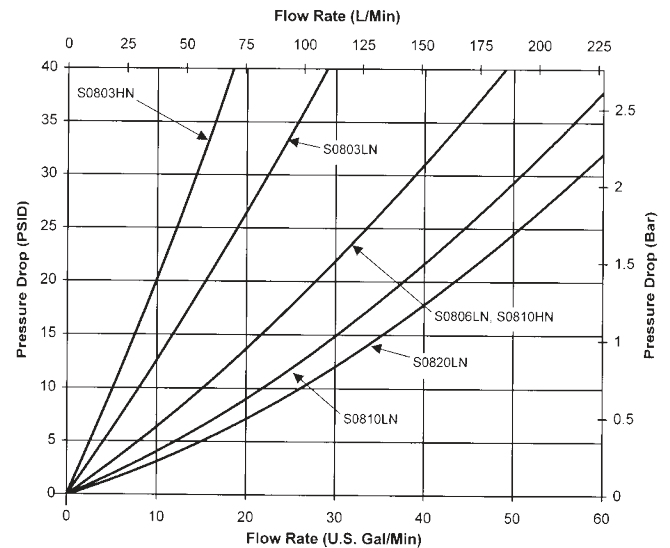
For 1" Ports and 4" (100 MM) Element



For 3/4" Ports and 8" (200 MM) Element



For 1" Ports and 8" (200 MM) Element



PRESSURE