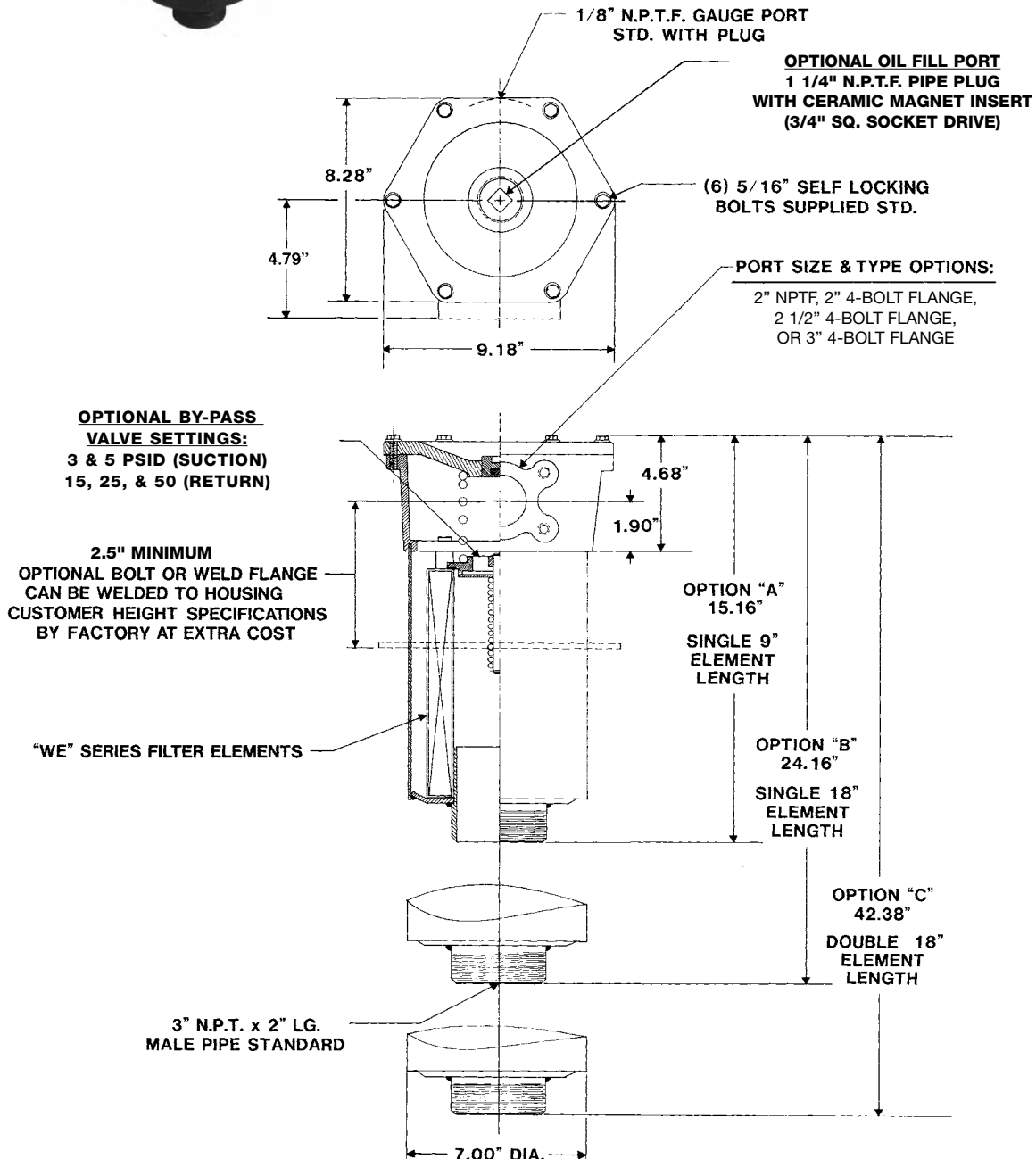




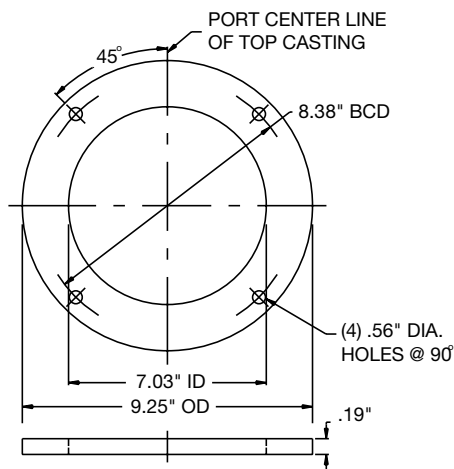
WF-2 SERIES TANK-TOP FILTER

Flows Up To: 300 GPM (Return) 100 GPM (Suction)
 Port Sizes: 2" NPTF
 2" 4-Bolt Flange
 2 1/2" 4-Bolt Flange
 3" 4-Bolt Flange
 Pressure: 300 PSI Max. Operating Pressure
 Temperature: Up to 250°F
 Application: Petroleum-based fluids.



Consult Manufacturer for Ordering Information

Optional Mounting Flanges



Bolt Flange (Part Number WF-10):

- For bolt down installation to reservoir.
- Bolt flange supplied with 1/8" thick gasket.

Weld Flange (Part Number WF-09):

- For weld in place installation on reservoir.
- Weld flange identical to bolt flange except without bolt clearance holes and gasket.

Note:

- 7.06" to 7.38" dia. hole in reservoir wall required for proper installation.
- Flanges can be welded to filter housings by factory as an extra cost option. Specify the desired height required from port center line to mounting surface (reservoir wall), 2.5" minimum.